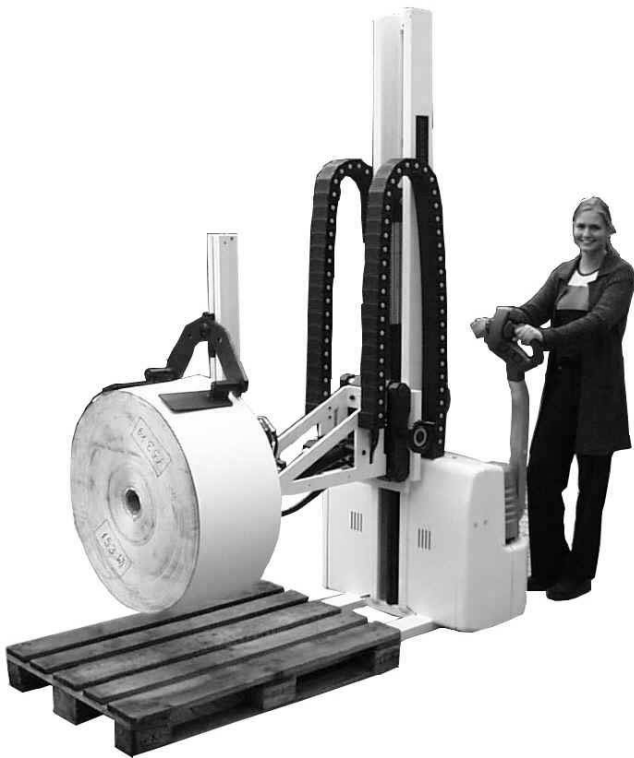


KU350

Motorised Roll Lifter / Roll Turner

(with electro-hydraulic
lifting and tilting facility)



SPECIFICATIONS

MODEL	KU350DFM	KU350DHFM
Lifting height	1740 mm	2180 mm
Clearance height	1450 mm	1890 mm
Min / max roll diameter	400 / 1300 mm	400 / 1300 mm
Min / max roll width	160 / 500 mm	160 / 500 mm
Max. roll weight	350 kg	350 kg
Lifts per charge	>200	>200
Core diameter	76 mm (3")	76 mm (3")
Expansion mandrel	Yes	Yes
Roll clamp	Double	Double
Turning motor	Hydraulic	Hydraulic
Laterally moverable arm	Yes	Yes
Motorized	Yes	Yes
Battery charger	Built-in	Built-in
Energy meter	Yes	Yes
Dimensions (HxWxL)	2,0 x 0,8 x 1,6 m	2,4 x 0,8 x 1,6 m
Weight	500 kg	500 kg

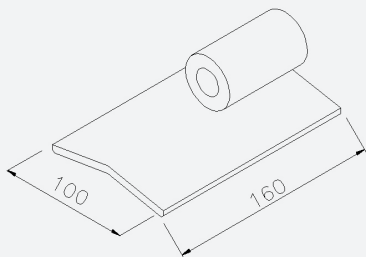
The **KU350** are motorised roll lifters/roll turners enabling production rolls to be taken down from a pallet, turn them from horizontal into a vertical position and place them either on the floor or directly in the rewind or unwind section of the machine where the roll is to be handled.

OPTIONAL EQUIPMENT:

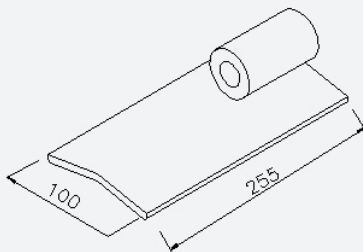
- Adapter from $\varnothing 70/76\text{mm}$ (2.8/3.0") to $\varnothing 152.4\text{mm}$ (6.0") centre mandrel
- Long pressing plates (clamps) for holding soft, special materials or wide rolls
- Extension (for centre mandrel) for wide rolls

CLAMPS/PRESSING PLATES AVAILABLE

Standard

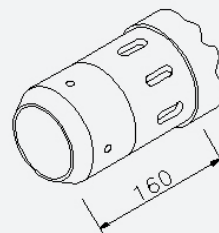


Option (long)

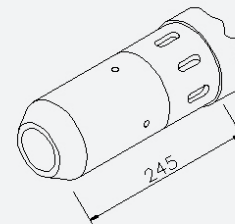


MANDREL LENGTHS

Standard



Option (long)



Dimensions

